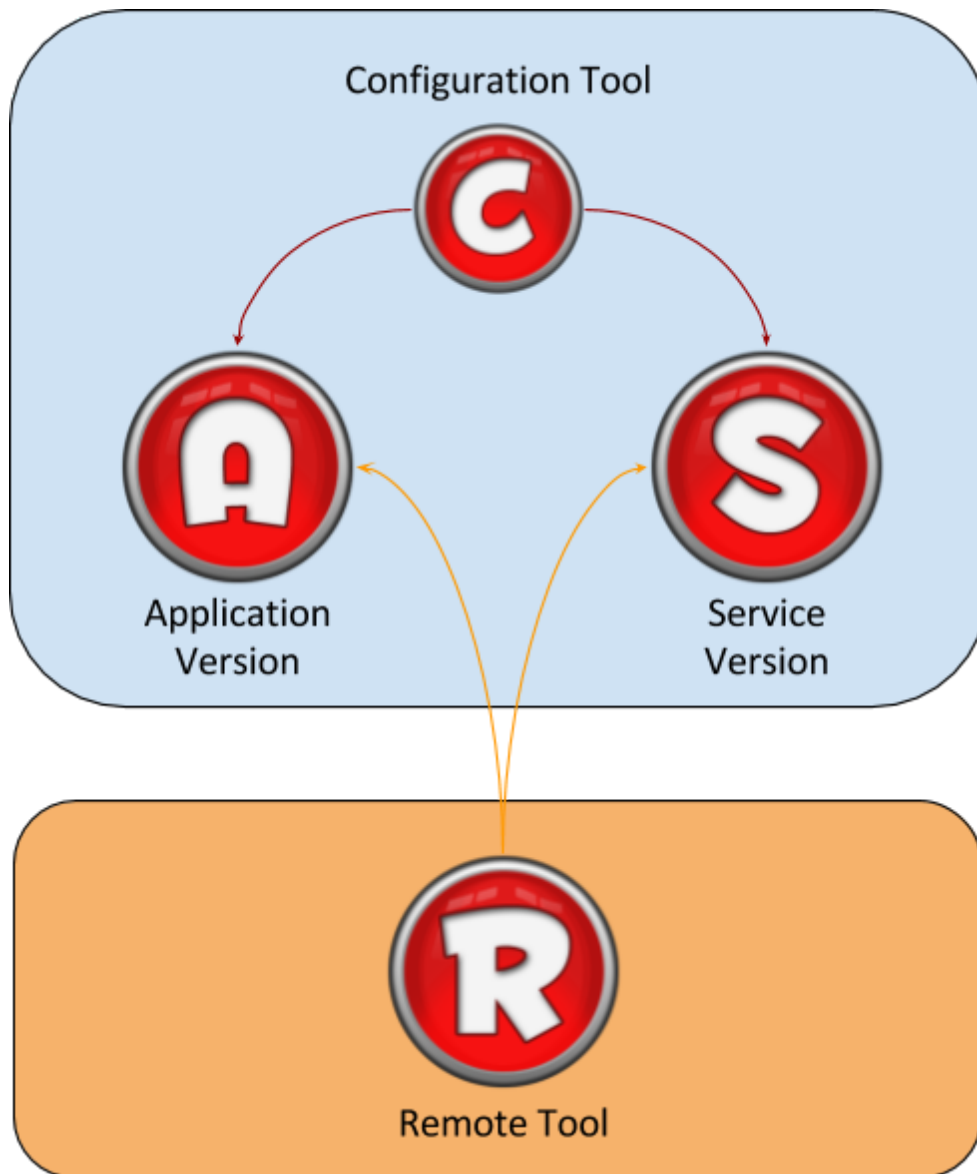


# LimagitoX2 File Mover *INTRO*

v20170505



LimagitoX2 (v12) File Mover now consists out of 4 executables:

1. LimagitoXA.exe: **A**pplication version
2. LimagitoXS.exe: **S**ervice version
3. LimagitoXC.exe: **C**onfiguration Tool
4. LimagitoXR.exe: **R**emote Setup Tool

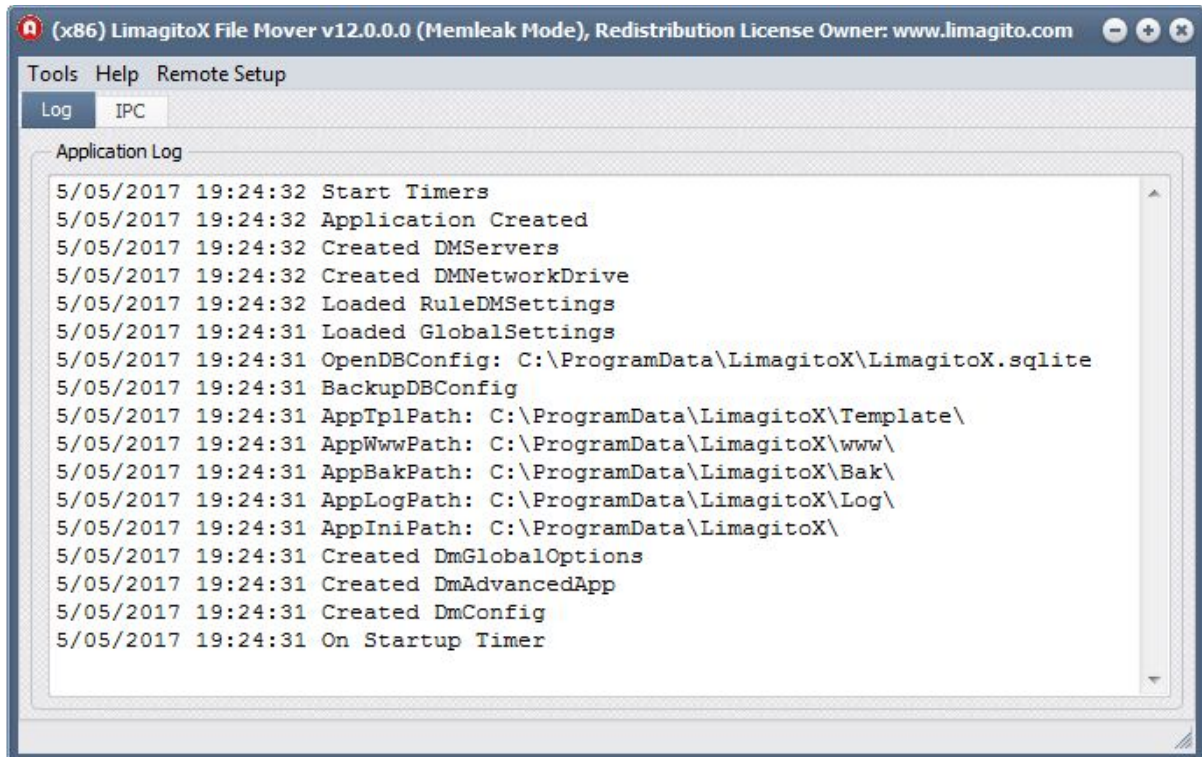
Important: Please do not rename any of these files.

# LimagitoX2 File Mover *INTRO*

v20170505



## Application Version



The "Application" version no longer has a full GUI like it did in all its previous versions. A basic log window will give you some information what the application engine is doing. Application will mostly run at startup and minimized to the system tray. Setup is now done by a new tool we developed, called LimagitoX Remote. Click Remote Setup in the top menu to open this tool.

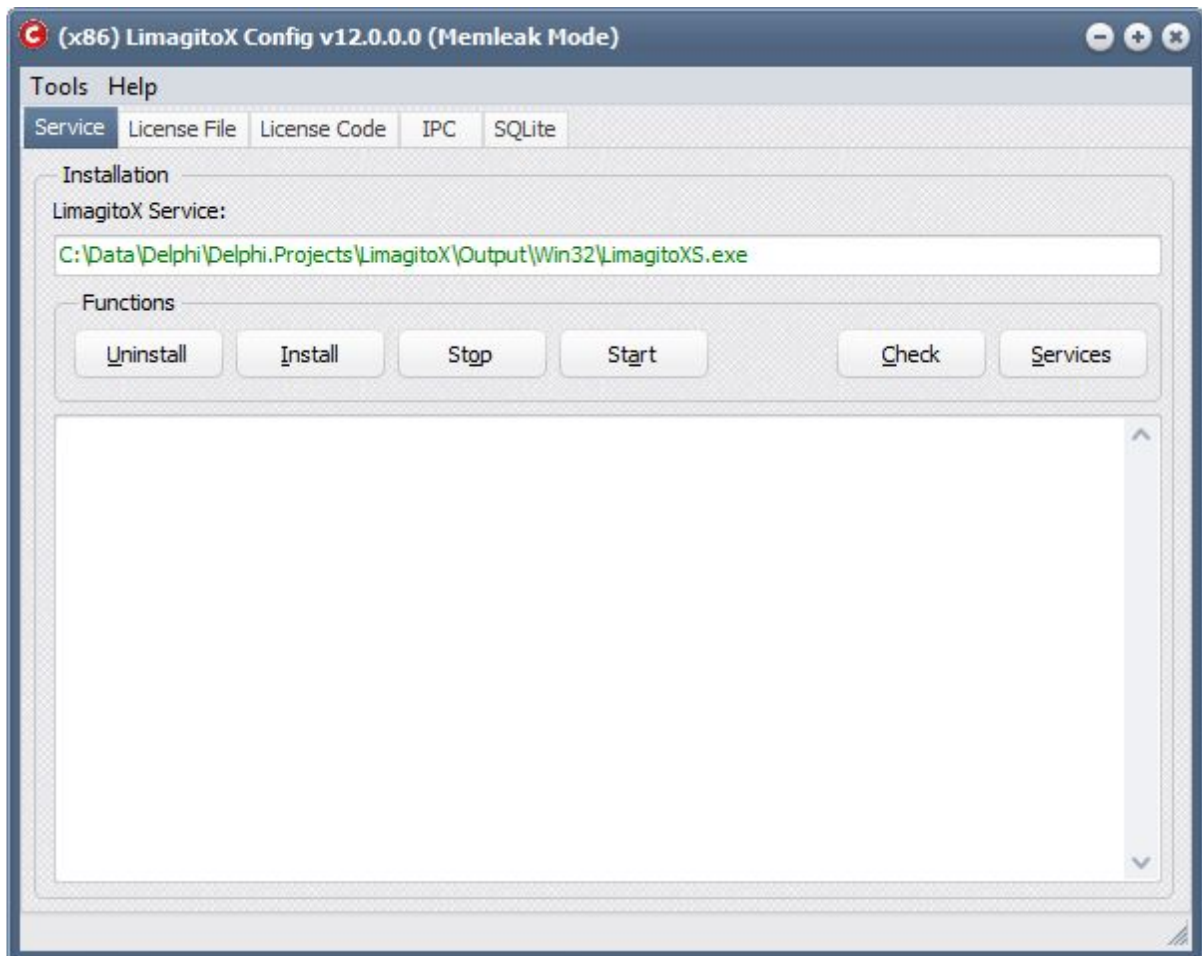


## Service Version

The Service version of our File Mover is an alternative for the application version. Don't use them both at the same time, it's either Application or Service. Please use our new "Configuration Tool" to install/uninstall or Stop/Start the "Service" version. Setup of the Service is now done directly by a new tool we developed, called LimagitoX Remote. So you no longer need to stop/start the service after configuration changes!



## Configuration Tool



Usage of the "Configuration" Tool:

- Service Version
  - Install/Uninstall the File Mover Service
  - Start/Stop the File Mover Service
  - Check the Status of the File Mover Service
- Application & Service Version
  - Import License File
  - Import License Code (+PLUS Option Pack)
  - IPC/IMC Connection Setup
  - Backup Settings (SQLite DB)

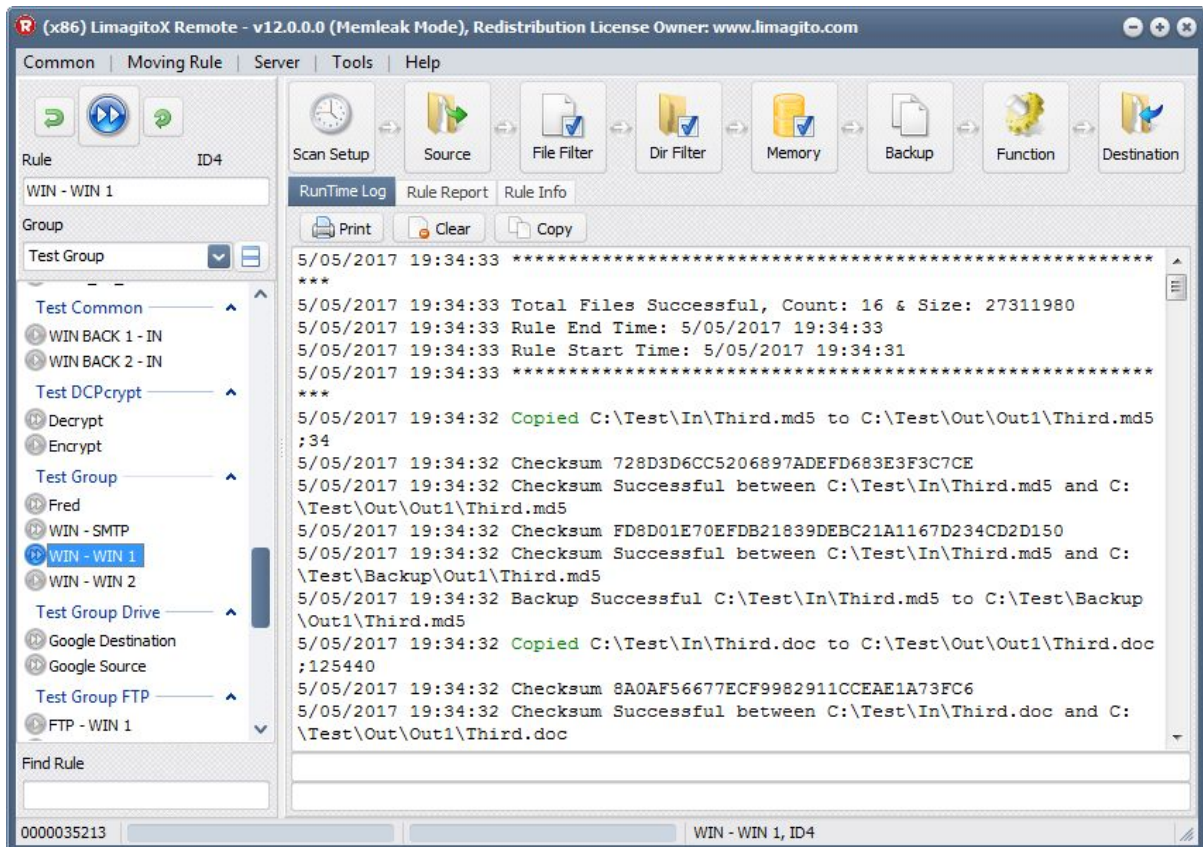
# LimagitoX2 File Mover *INTRO*

v20170505

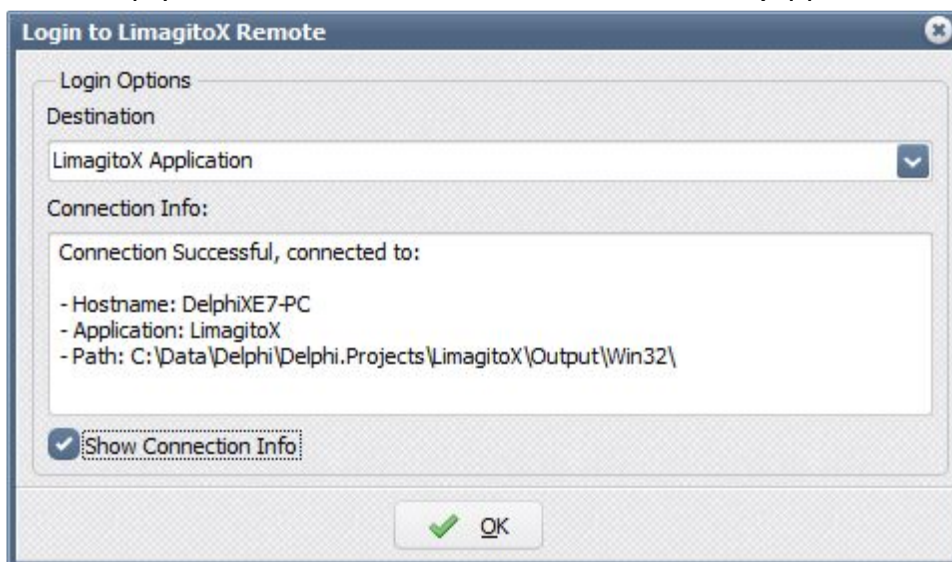


## Remote Tool

The setup of the application or service is done by this new tool. The GUI is almost identical to the previous version.



At startup you'll be asked to select the destination (Application or Service):



Credits: [www.iconarchive.com](http://www.iconarchive.com)